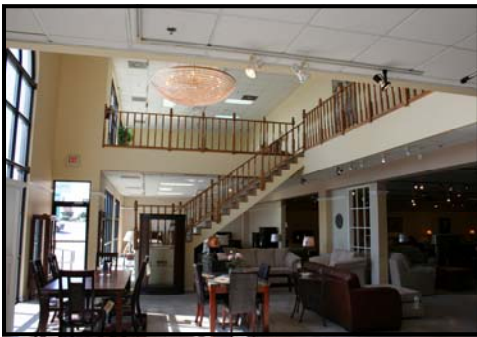


## FOR SALE/LEASE

1602 South Stratford Road  
Winston-Salem, NC

Prime 32,500 sq. ft.  
Retail Home  
Furnishings  
Showroom



### -FEATURES-

- ◆ Premium location directly across from Hanes Mall
- ◆ Excellent presence with 200 ft. of frontage on Stratford Road
- ◆ Strong traffic count of 23,000 cars per day
- ◆ Premier regional shopping destination
- ◆ Purchase for only \$2,400,000
- ◆ Lease for only \$6.65 per sq. ft. NNN

## FREEMAN

COMMERCIAL REAL ESTATE  
1255 Creekshire Way, Suite 200  
Winston-Salem, NC 27103

FOR FURTHER INFORMATION  
CONTACT:

BRAD MILLSAPS, CCIM

PHONE: 336-768-4410

FAX: 336-768-4413

EMAIL:

BRAD@FREEMANCOMMERCIAL.COM

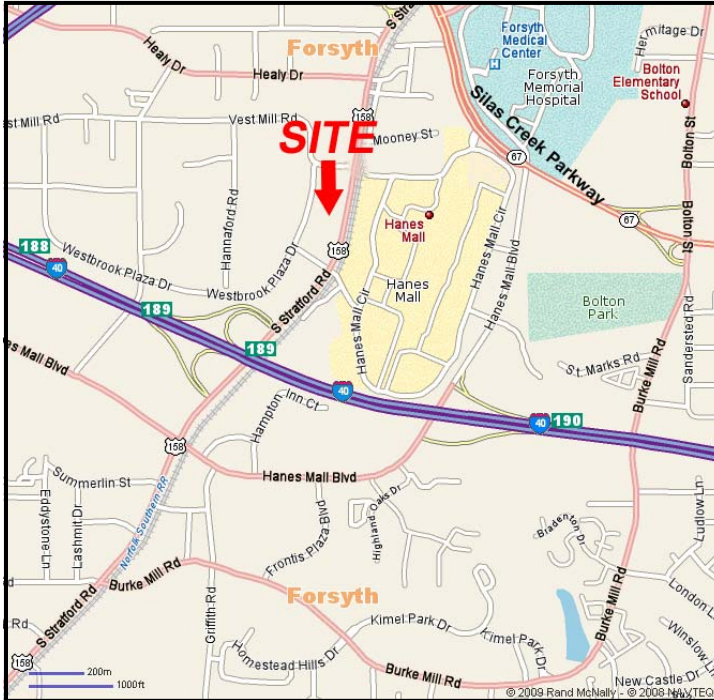
Visit us on the Web

[www.freemancommercial.com](http://www.freemancommercial.com)

# FREEMAN COMMERCIAL REAL ESTATE

1602 South Stratford Road  
Winston-Salem, NC

## Location Maps



## Aerial



NO WARRANTY OR REPRESENTATION IS MADE TO THE ACCURACY OF THE INFORMATION CONTAINED HEREIN. ALL INFORMATION IS SUBJECT TO CHANGE OR WITHDRAWAL. NO LIABILITY IS ASSUMED FOR ANY INACCURACY OF ANY INFORMATION.