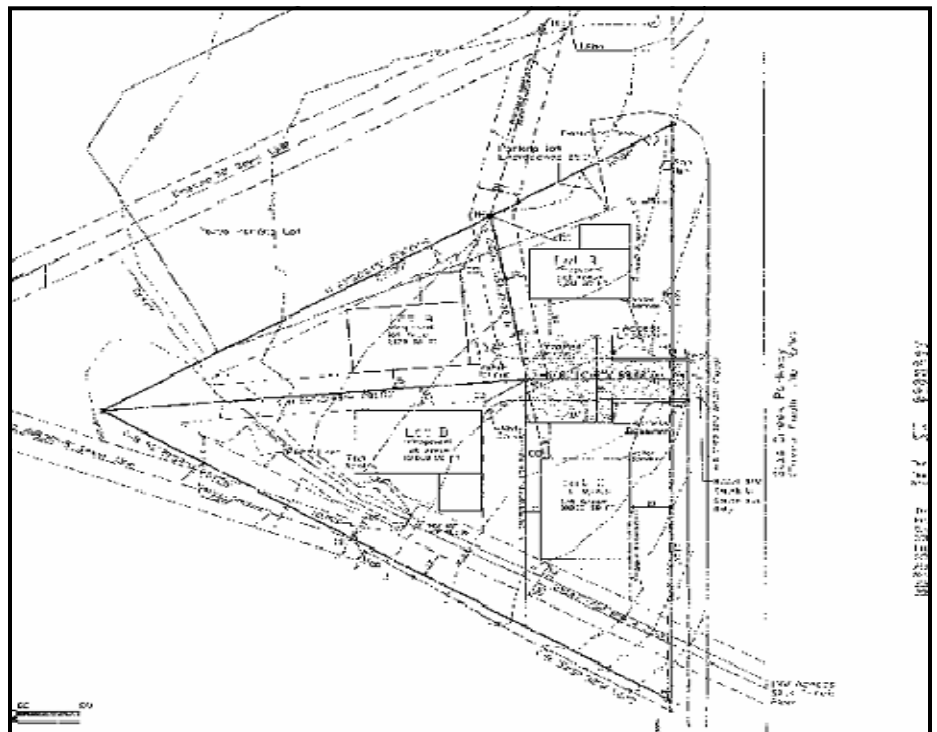


# FREEMAN COMMERCIAL REAL ESTATE

## Cluster Home Project For Sale Adjoining Shaffner Park Silas Creek Parkway, Winston-Salem, NC

- ◆ Excellent small residential development
- ◆ Can sub-divide lot into four lots under existing R-S-9 Zoning
- ◆ Direct Access to Silas Creek Parkway and I-40
- ◆ Fronting 317+/- ft. of Silas Creek Parkway
- ◆ Easy access to Wake Forest Baptist and Forsyth Medical Center
- ◆ Adjoining Shaffner Park just South of Kirkless Road



### FREEMAN

COMMERCIAL REAL ESTATE  
1255 Creekshire Way, Suite 200  
Winston-Salem, NC 27103

FOR FURTHER INFORMATION  
CONTACT:

LADD FREEMAN

PHONE: 336-768-4410

FAX: 336-768-4413

EMAIL:

LADD@FREEMANCOMMERCIAL.COM

Visit us on the Web

[www.freemancommercial.com](http://www.freemancommercial.com)

NO WARRANTY OR REPRESENTATION IS MADE TO THE ACCURACY OF THE INFORMATION CONTAINED HEREIN. ALL INFORMATION IS SUBJECT TO CHANGE OR WITHDRAWAL. NO LIABILITY IS ASSUMED FOR ANY INACCURACY OF ANY INFORMATION.