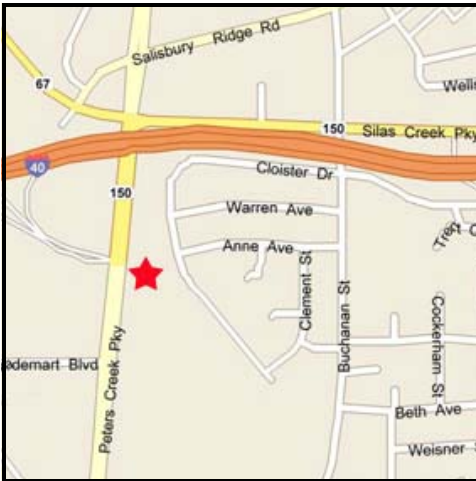


FOR SALE

Peters Creek Parkway Winston-Salem, NC



-FEATURES-

- ◆ Excellent location at the intersection of Peters Creek Parkway and 1-40
- ◆ Traffic Count is 38,000 cars per day
- ◆ Direct access from 1-40 ramp
- ◆ Size of lot is 1.72 acres, with 1.5 acre usable
- ◆ Utilities are available, and is currently zoned Light Office

FREEMAN
COMMERCIAL REAL ESTATE
1255 Creekshire Way, Suite 200
Winston-Salem, NC 27103

FOR FURTHER INFORMATION

CONTACT:

BOB ANDERSON

PHONE: 336-768-4410

FAX: 336-768-4413

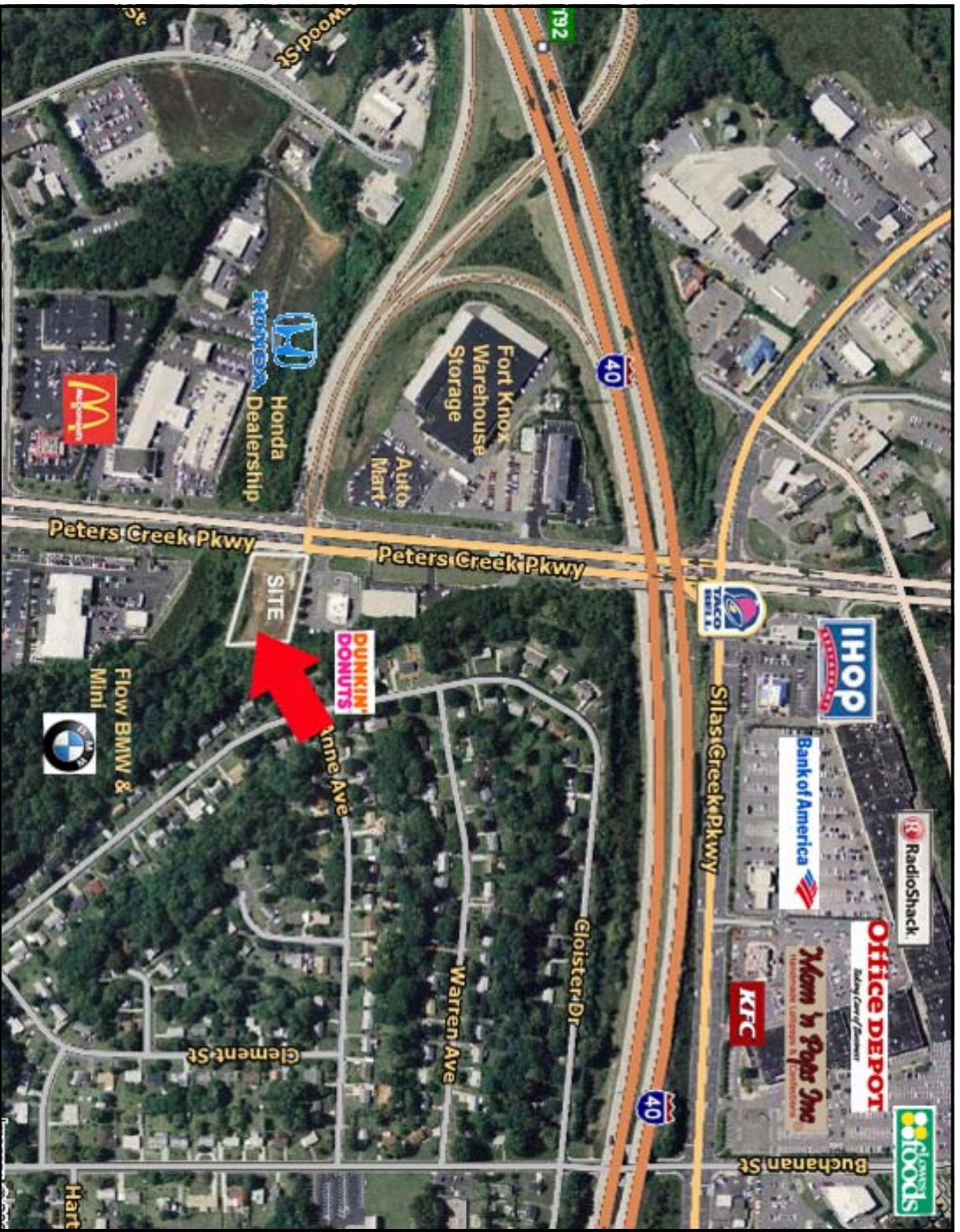
EMAIL:

BOB@FREEMANCOMMERCIAL.COM

Visit us on the Web

www.freemancommercial.com

FREEMAN COMMERCIAL REAL ESTATE



NO WARRANTY OR REPRESENTATION IS MADE TO THE ACCURACY OF THE INFORMATION CONTAINED HEREIN. ALL INFORMATION IS SUBJECT TO CHANGE OR WITHDRAWAL. NO LIABILITY IS ASSUMED FOR ANY INACCURACY OF ANY INFORMATION.