

# FREEMAN COMMERCIAL REAL ESTATE

## Bank Owned Class A Office Condos Linville Professional Center, Kernersville, NC

Front View



Rear View



### **FREEMAN**

COMMERCIAL REAL ESTATE

1255 Creekshire Way, Suite 200  
Winston-Salem, NC 27103

**FOR FURTHER INFORMATION**

**CONTACT:**

**BOB ANDERSON**

**PHONE: 336-768-4410**

**FAX: 336-768-4413**

**EMAIL:**

**BOB@FREEMANCOMMERCIAL.COM**

**Visit us on the Web**

**www.freemancommercial.com**

### **-FEATURES-**

- ◆ These Class A Condominium units are bank owned and competitively priced to sell
- ◆ Custom professional office condominiums central Kernersville location: access to North Main Street and Business I-40
- ◆ Quality construction with spacious floor plans ready for customized interior build out
- ◆ There are 16 units (36,000 total sf) available; flexible unit size beginning at 1,250 sf

**NO WARRANTY OR REPRESENTATION IS MADE TO THE ACCURACY OF THE INFORMATION CONTAINED HEREIN. ALL INFORMATION IS SUBJECT TO CHANGE OR WITHDRAWAL. NO LIABILITY IS ASSUMED FOR ANY INACCURACY OF ANY INFORMATION.**

# FREEMAN COMMERCIAL REAL ESTATE

900 Old Winston Road  
Kernersville, NC

## Aerial



Demographics	3 Mile	5 Mile	7 Mile
Population	33,010	59,533	106,031
Average HH Income	\$74,834	\$73,251	\$68,728
Employment	15,999	28,251	47,625

### Traffic Counts:

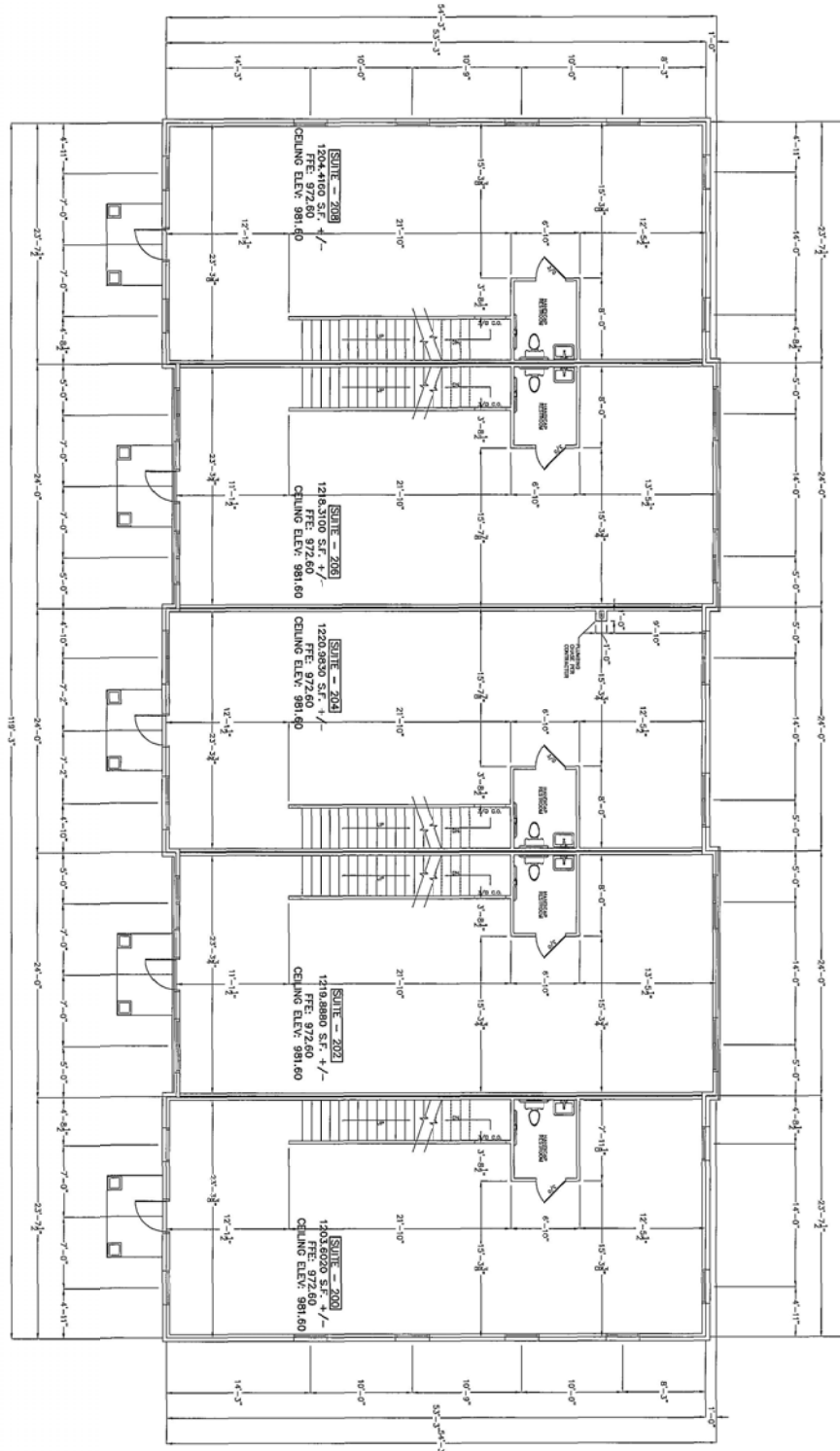
I-40 Business	51,000 VPD
NC Hwy 150/S. Main	19,000 VPD

NO WARRANTY OR REPRESENTATION IS MADE TO THE ACCURACY OF THE INFORMATION CONTAINED HEREIN. ALL INFORMATION IS SUBJECT TO CHANGE OR WITHDRAWAL. NO LIABILITY IS ASSUMED FOR ANY INACCURACY OF ANY INFORMATION.

# FREEMAN COMMERCIAL REAL ESTATE

900 Old Winston Road  
Kernersville, NC

## Floor Plan



**NO WARRANTY OR REPRESENTATION IS MADE TO THE ACCURACY OF THE INFORMATION CONTAINED HEREIN. ALL INFORMATION IS SUBJECT TO CHANGE OR WITHDRAWAL. NO LIABILITY IS ASSUMED FOR ANY INACCURACY OF ANY INFORMATION.**