

FREEMAN COMMERCIAL REAL ESTATE

FOR SALE OR LEASE

10,000 SF Industrial Facility on 12 AC



- ◆ Medical Office
- ◆ General Office
- ◆ Warehouse
- ◆ Business

10,000 sf industrial facility; 4,000 sf “Class A” office; 6,000 sf warehouse; 12 acres industrial land

Owner will subdivide office and warehouse for right tenant

Large gravel fenced parking and storage area

FREEMAN

COMMERCIAL REAL ESTATE

1255 Creekshire Way, Suite 200
Winston-Salem, NC 27103

FOR FURTHER INFORMATION
CONTACT:

LADD FREEMAN

PHONE: 336-768-4410

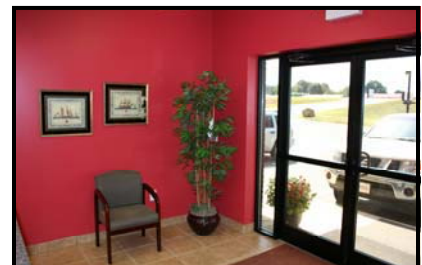
FAX: 336-768-4413

EMAIL:

LADD@FREEMANCOMMERCIAL.COM

Visit us on the Web

www.freemancommercial.com



NO WARRANTY OR REPRESENTATION IS MADE TO THE ACCURACY OF THE INFORMATION CONTAINED HEREIN. ALL INFORMATION IS SUBJECT TO CHANGE OR WITHDRAWAL. NO LIABILITY IS ASSUMED FOR ANY INACCURACY OF ANY INFORMATION.

FREEMAN COMMERCIAL REAL ESTATE

**512 Newsome Road
King, NC**

West Side Drive-In Door



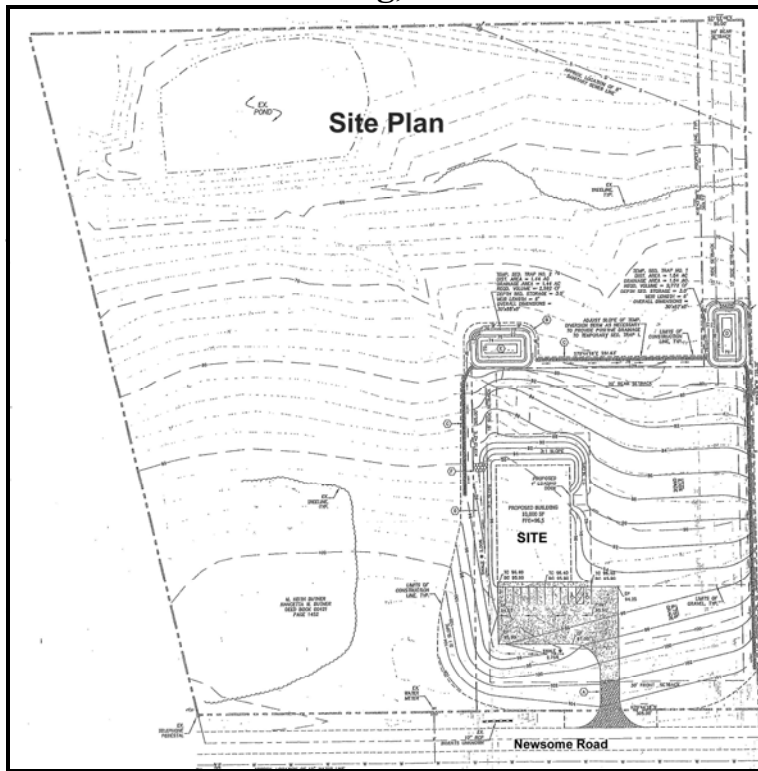
East Side Dock Door and Storage Yard



NO WARRANTY OR REPRESENTATION IS MADE TO THE ACCURACY OF THE INFORMATION CONTAINED HEREIN. ALL INFORMATION IS SUBJECT TO CHANGE OR WITHDRAWAL. NO LIABILITY IS ASSUMED FOR ANY INACCURACY OF ANY INFORMATION.

FREEMAN COMMERCIAL REAL ESTATE

512 Newsome Road
King, NC



NO WARRANTY OR REPRESENTATION IS MADE TO THE ACCURACY OF THE INFORMATION CONTAINED HEREIN. ALL INFORMATION IS SUBJECT TO CHANGE OR WITHDRAWAL. NO LIABILITY IS ASSUMED FOR ANY INACCURACY OF ANY INFORMATION.