

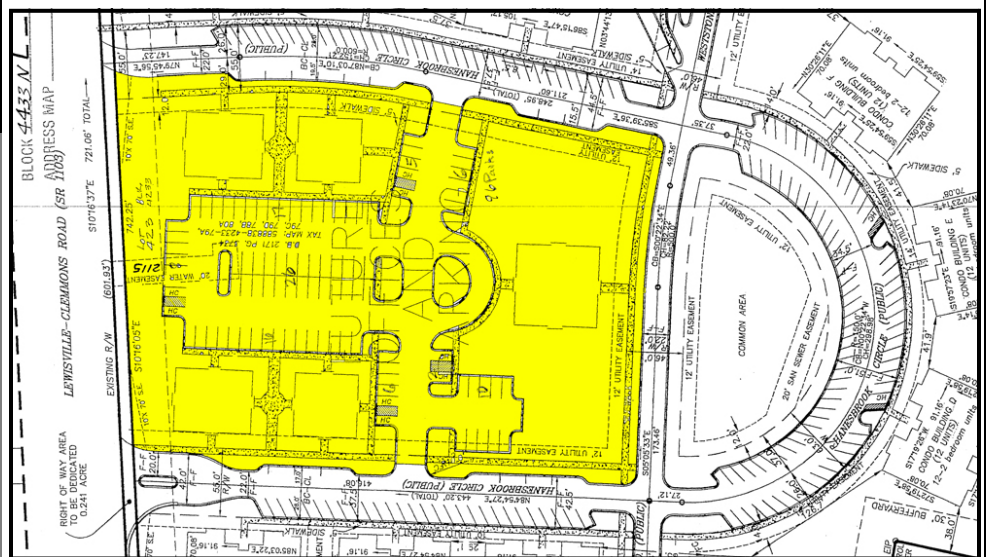
# FREEMAN COMMERCIAL REAL ESTATE

## FOR SALE

Lewisville-Clemmons Road - Commercial Land  
Hanesbrook Circle  
Clemmons, NC

2.61  
Acres

Zoned Rough  
Graded Pad  
Ready For  
Development



## FREEMAN

COMMERCIAL REAL ESTATE  
1255 Creekshire Way, Suite 200  
Winston-Salem, NC 27103

FOR FURTHER INFORMATION  
CONTACT:

BRAD MILLSAPS, CCIM

PHONE: 336-768-4410

FAX: 336-768-4413

EMAIL:  
BRAD@FREEMANCOMMERCIAL.COM

Visit us on the Web  
[www.freemancommercial.com](http://www.freemancommercial.com)

### -FEATURES-

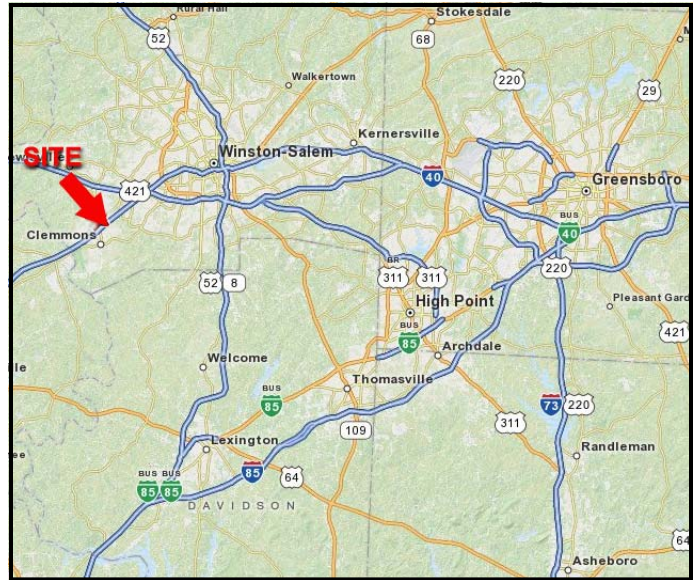
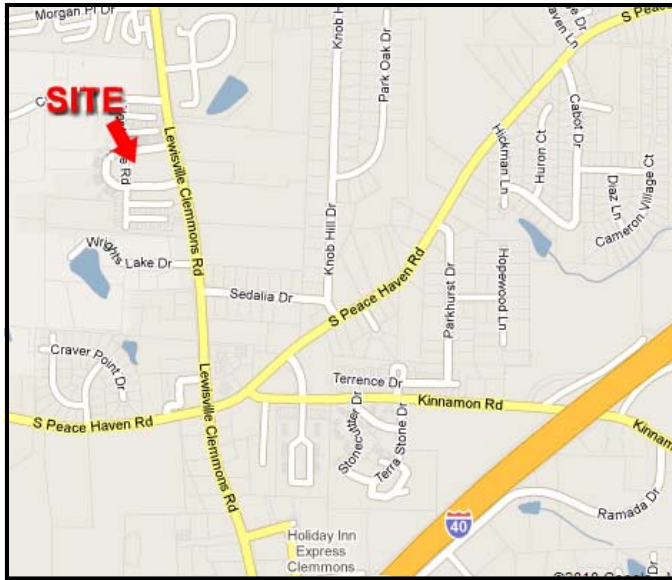
- ◆ Rare median break on Lewisville-Clemmons Road with traffic count of 17,000 cars per day
- ◆ Area demographics among the most affluent in the triad
- ◆ Only \$8.50 per square foot

NO WARRANTY OR REPRESENTATION IS MADE TO THE ACCURACY OF THE INFORMATION CONTAINED HEREIN. ALL INFORMATION IS SUBJECT TO CHANGE OR WITHDRAWAL. NO LIABILITY IS ASSUMED FOR ANY INACCURACY OF ANY INFORMATION.

# FREEMAN COMMERCIAL REAL ESTATE

## Hanesbrook Circle Clemmons, NC

### Location Maps



For Information Contact: Brad Millsaps, CCIM 336/768-4410; brad@freemancommercial.com

NO WARRANTY OR REPRESENTATION IS MADE TO THE ACCURACY OF THE INFORMATION CONTAINED HEREIN. ALL INFORMATION IS SUBJECT TO CHANGE OR WITHDRAWAL. NO LIABILITY IS ASSUMED FOR ANY INACCURACY OF ANY INFORMATION.