

## FLEX SPACE FOR LEASE

Off Hwy 66  
Kernersville, NC



Heart of the Triad Location

### **FREEMAN**

COMMERCIAL REAL ESTATE  
1255 Creekshire Way, Suite 200  
Winston-Salem, NC 27103

FOR FURTHER INFORMATION  
CONTACT:

STEVE FOWLER

PHONE: 336-768-4410

FAX: 336-768-4413

EMAIL:

STEVE@FREEMANCOMMERCIAL.COM

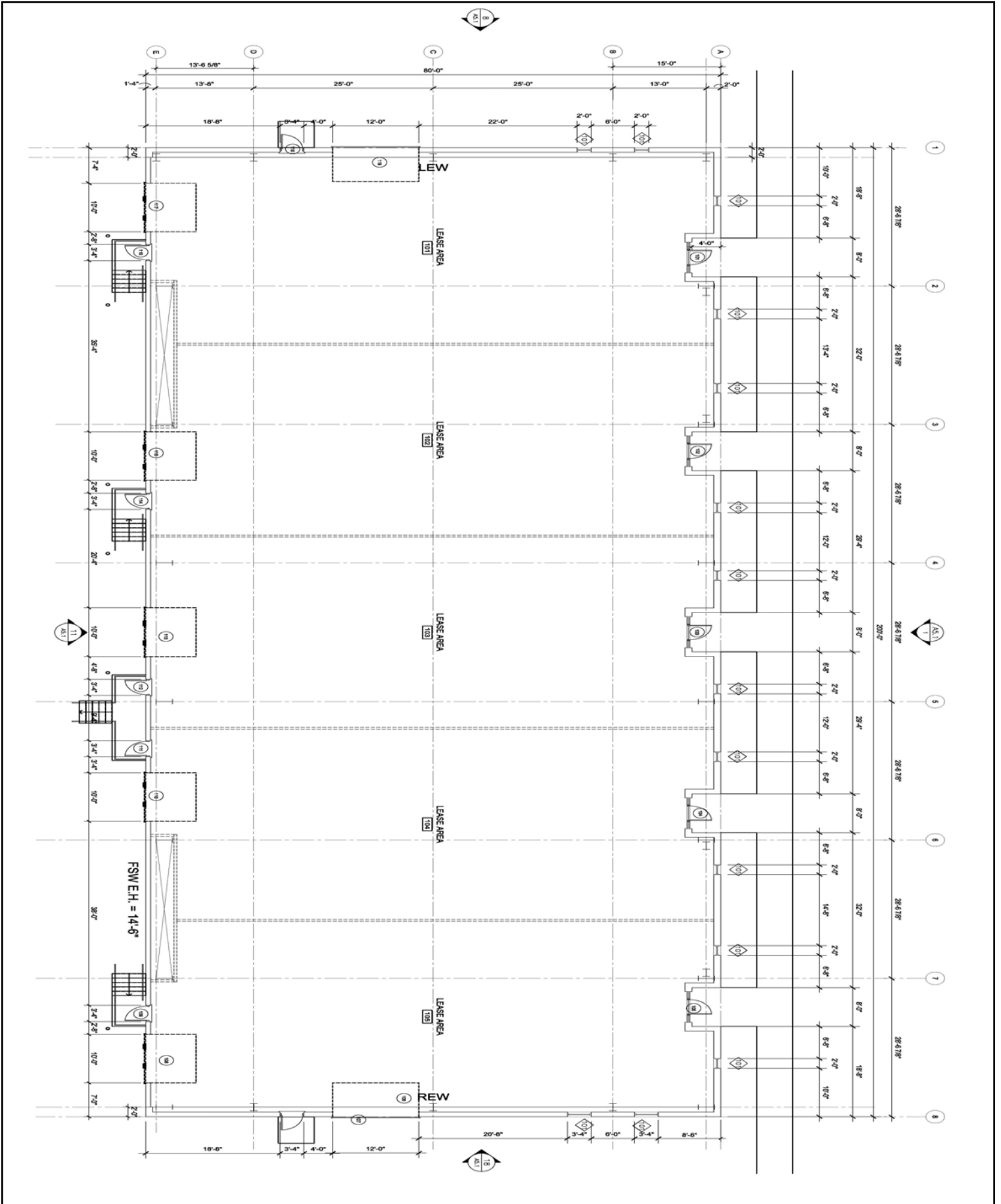
Visit us on the Web

[www.freemancommercial.com](http://www.freemancommercial.com)

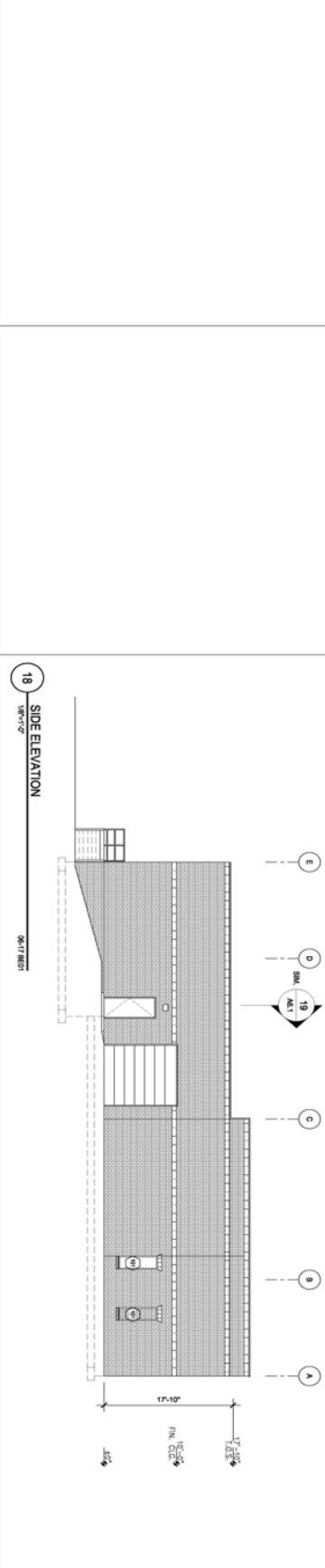
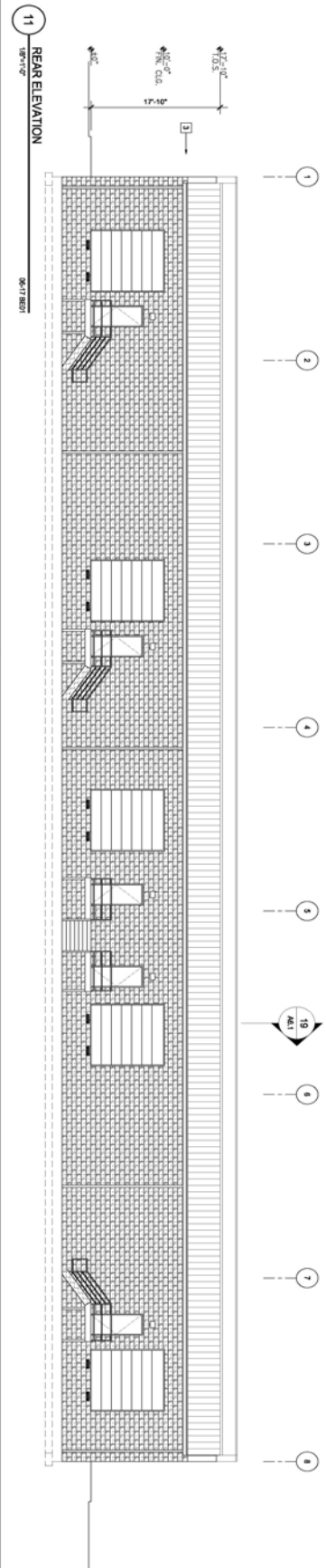
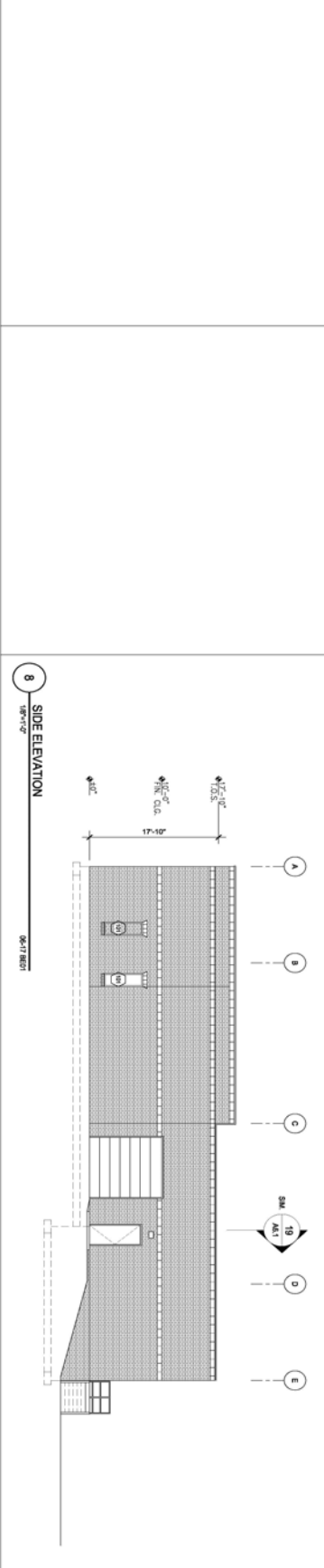
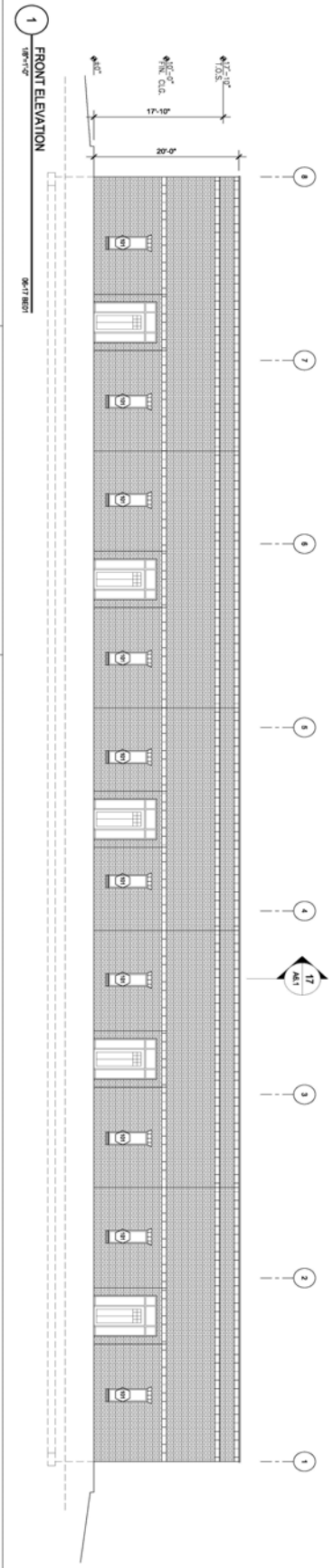
### **-FEATURES -**

- ◆ Between the I-40's
- ◆ 16,000 sq ft subdividable
- ◆ Zoned Light Industrial, all brick construction
- ◆ Excellent location, access to Business 40 and I-40, and near Piedmont Triad International Airport, the new FedEx terminal and the new Novant Health Hospital
- ◆ Dock high doors available in all bays/with drive-ins on end units

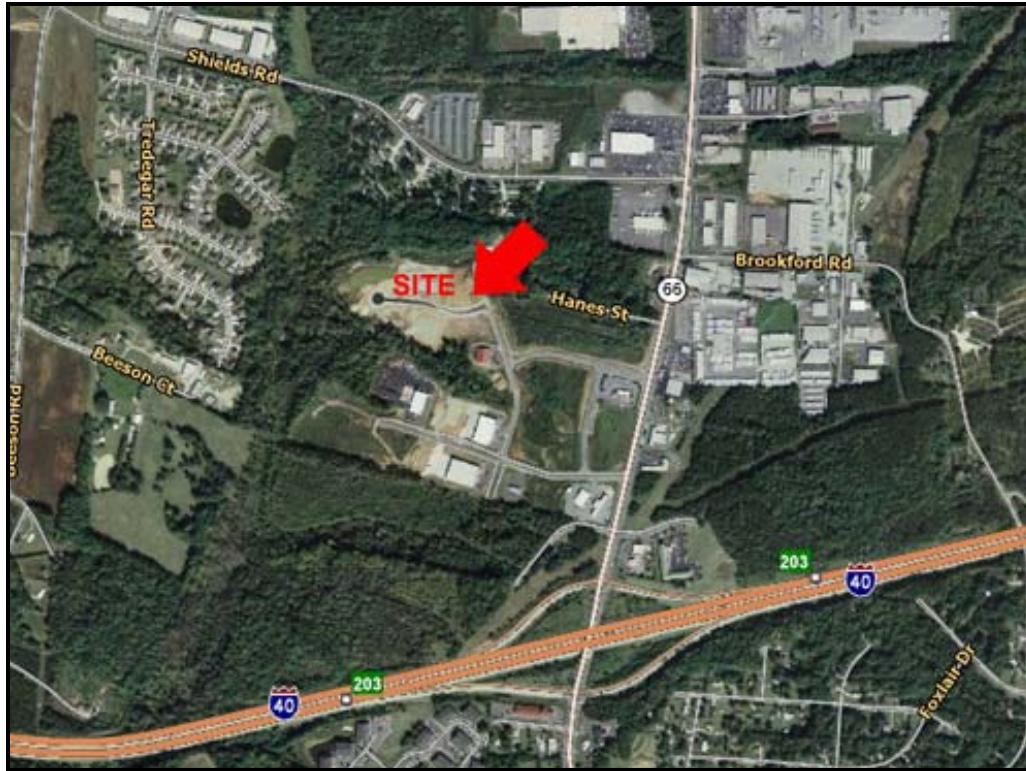
# FREEMAN COMMERCIAL REAL ESTATE



# FREEMAN COMMERCIAL REAL ESTATE



# FREEMAN COMMERCIAL REAL ESTATE



NO WARRANTY OR REPRESENTATION IS MADE TO THE ACCURACY OF THE INFORMATION CONTAINED HEREIN. ALL INFORMATION IS SUBJECT TO CHANGE OR WITHDRAWAL. NO LIABILITY IS ASSUMED FOR ANY INACCURACY OF ANY INFORMATION.