

## Executive Park Offices

Stratford Executive Park

280 Charlois Boulevard

Winston-Salem, NC

For Lease  
10,400+/- Sq. Ft.  
Office, Showroom,  
Retail, Restaurant

Only \$9.50 psf NNN



### FREEMAN

COMMERCIAL REAL ESTATE

1255 Creekshire Way, Suite 200  
Winston-Salem, NC 27103

FOR FURTHER INFORMATION

CONTACT:

ABNER WRIGHT

BRAD MILLSAPS, CCIM

PHONE: 336-768-4410

FAX: 336-768-4413

EMAIL:

ABNER@FREEMANCOMMERCIAL.COM

BRAD@FREEMANCOMMERCIAL.COM

Visit us on the Web

[www.freemancommercial.com](http://www.freemancommercial.com)

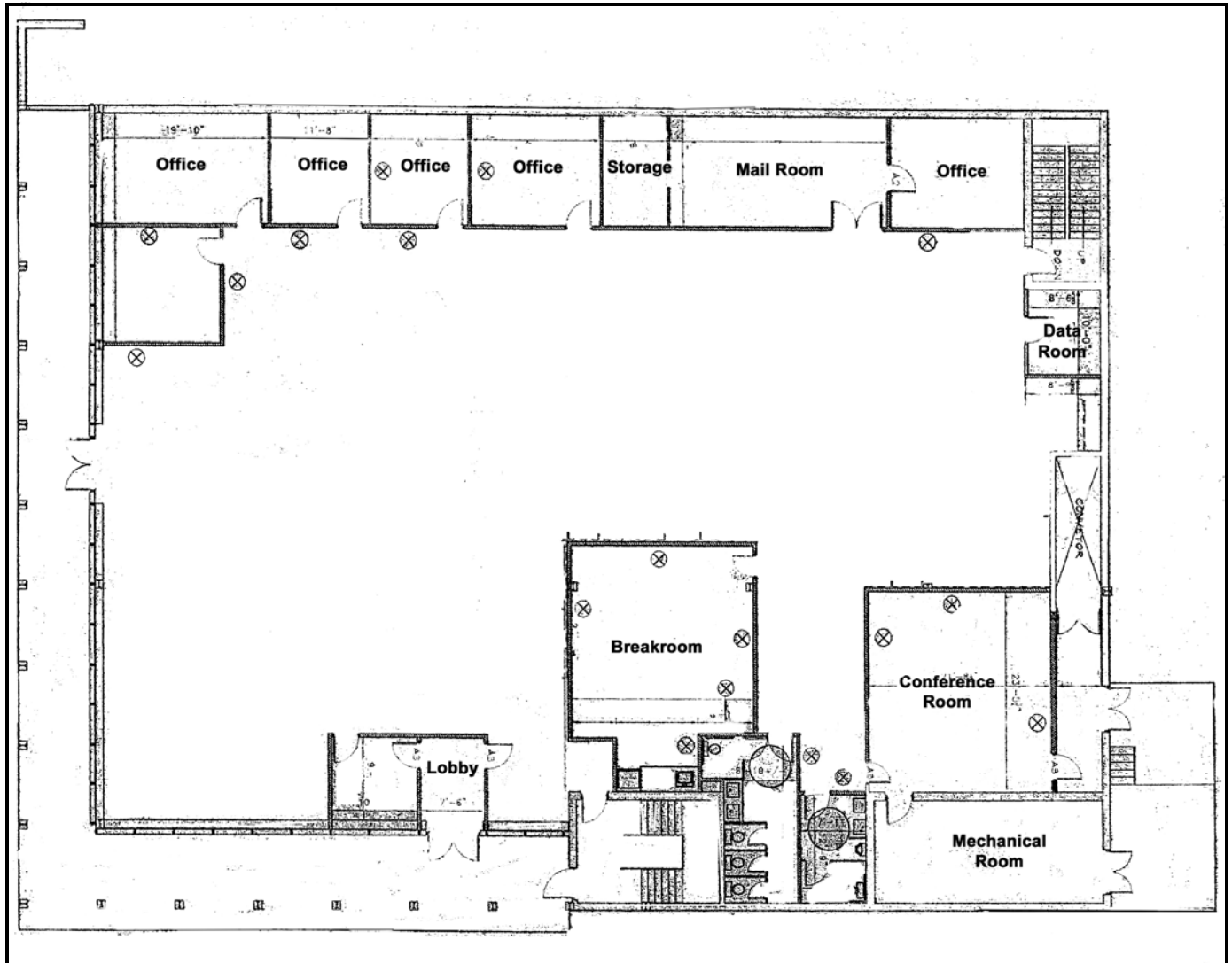
### -FEATURES-

- ◆ Excellent office, call center or retail
- ◆ One of the most prominent and accessible locations in Winston-Salem
- ◆ Floor plate up to 11,000 sq. ft.
- ◆ Abundant Parking, 161 parking spaces
- ◆ Convenient access to Silas Creek Parkway, Business 40, and both medical centers
- ◆ Lease rates as low as \$10.25 per sq. ft. mod. gross

# FREEMAN COMMERCIAL REAL ESTATE

280 Charlois Boulevard  
Winston-Salem, NC

Main Level Floor Plan

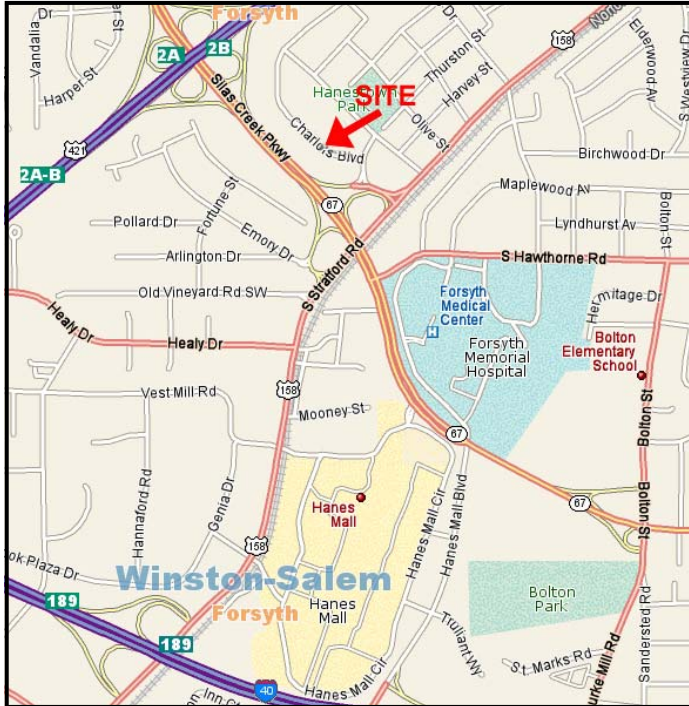


**NO WARRANTY OR REPRESENTATION IS MADE TO THE ACCURACY OF THE INFORMATION CONTAINED HEREIN. ALL INFORMATION IS SUBJECT TO CHANGE OR WITHDRAWAL. NO LIABILITY IS ASSUMED FOR ANY INACCURACY OF ANY INFORMATION.**

# FREEMAN COMMERCIAL REAL ESTATE

280 Charlois Boulevard  
Winston-Salem, NC

Map Vicinity



Map Region



Aerial



**NO WARRANTY OR REPRESENTATION IS MADE TO THE ACCURACY OF THE INFORMATION CONTAINED HEREIN. ALL INFORMATION IS SUBJECT TO CHANGE OR WITHDRAWAL. NO LIABILITY IS ASSUMED FOR ANY INACCURACY OF ANY INFORMATION.**