

FREEMAN COMMERCIAL REAL ESTATE

Land Lease or Build To Suit

Corner of Hwy 601 & Hwy 52 (Andy Griffith Pkwy)
Mt. Airy, NC

3.5 ACRES

- ◆ High corner traffic
- ◆ Great visibility
- ◆ Lease all or partial
- ◆ Will build to suit
- ◆ **CALL TODAY!**



FREEMAN

COMMERCIAL REAL ESTATE
1255 Creekshire Way, Suite 200
Winston-Salem, NC 27103

FOR FURTHER INFORMATION
CONTACT:

ABNER WRIGHT

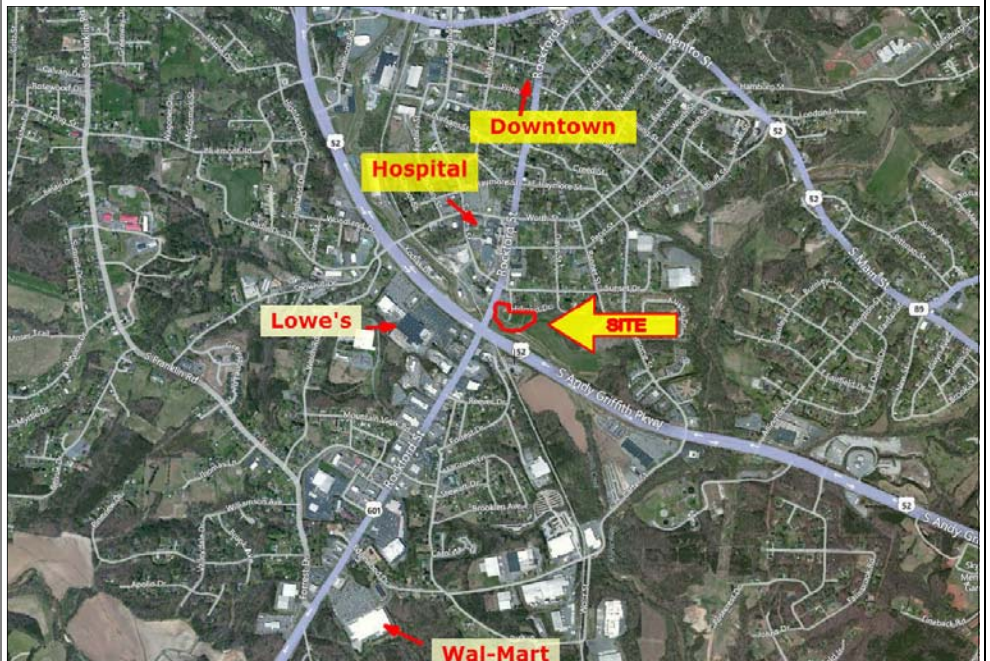
PHONE: 336-768-4410

FAX: 336-768-4413

EMAIL:

ABNER@FREEMANCOMMERCIAL.COM

Visit us on the Web

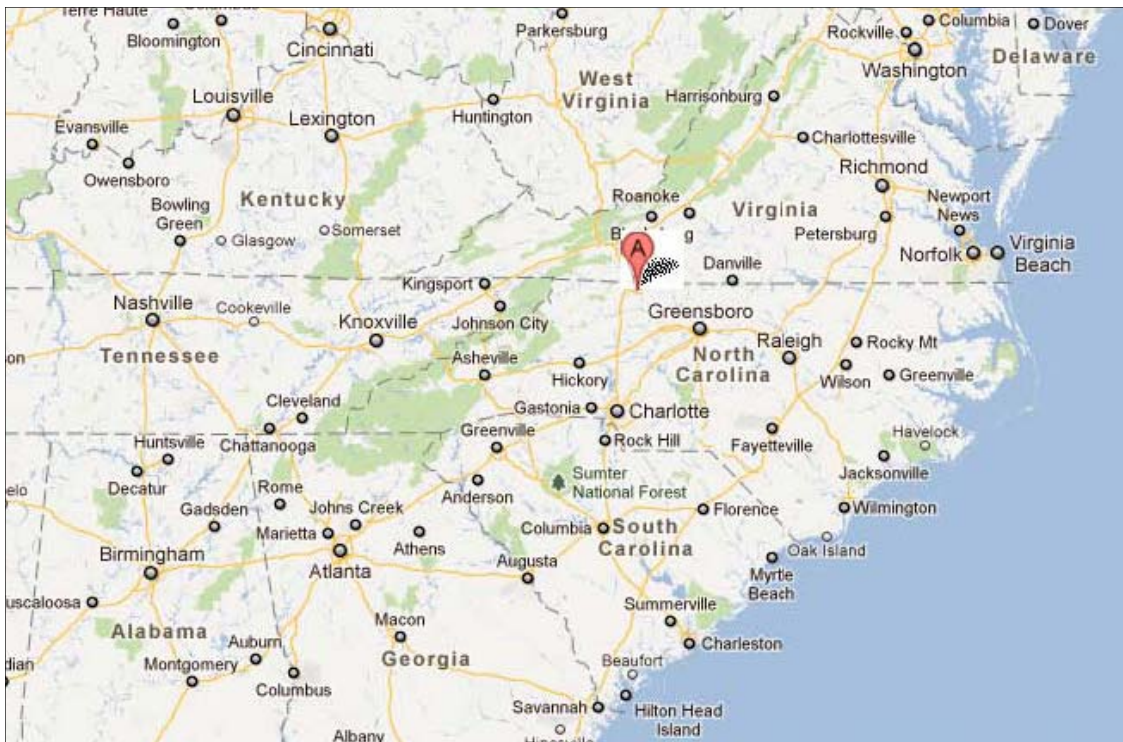


NO WARRANTY OR REPRESENTATION IS MADE TO THE ACCURACY OF THE INFORMATION CONTAINED HEREIN. ALL INFORMATION IS SUBJECT TO CHANGE OR WITHDRAWAL. NO LIABILITY IS ASSUMED FOR ANY INACCURACY OF ANY INFORMATION.

FREEMAN COMMERCIAL REAL ESTATE

- ◆ Traffic counts: 37,500 per NCDOT
- ◆ Businesses with 1 mile:
 - ◆ Walmart
 - ◆ Wendy's
 - ◆ Lowes
 - ◆ Bojangles
 - ◆ Hampton Inn
 - ◆ Hardees
 - ◆ Holiday Inn
 - ◆ Burger King
 - ◆ Microtel Suite
 - ◆ Walgreens
 - ◆ Golden Corral
 - ◆ Taco Bell
 - ◆ Waffle House
 - ◆ Chili's
 - ◆ Tractor Supply
 - ◆ Ruby Tuesday
 - ◆ McDonald's
 - ◆ Auto Zone

National Map



NO WARRANTY OR REPRESENTATION IS MADE TO THE ACCURACY OF THE INFORMATION CONTAINED HEREIN. ALL INFORMATION IS SUBJECT TO CHANGE OR WITHDRAWAL. NO LIABILITY IS ASSUMED FOR ANY INACCURACY OF ANY INFORMATION.